

### ■ General Information

Exhibition hall B0 and the foyer at the ICM may not generally be accessed by motor vehicles.

**The use of forklift trucks in the ground floor is only possible to a limited extent and is reserved for the accredited forwarding agents of Messe München GmbH.**

The **total permissible weight** of lifting- or transportation equipment and carried load results out of the maximum load-bearing capacity and nature of the floor concerned. For Hall B0 2000 kg, for the granite floor 1000 kg and for all areas with parquet 500 kg (see **Notice "Technical Information ICM"**).

**Within the ICM, only trolleys / crabs, hand carts and lifting equipment with abrasion-proof and clean rubber wheel tread may be used. For the transportation of heavy loads over parquet required soft tires.**

Any instructions issued by ICM personnel are to be followed.

### ■ Important

The full costs of restoring damages due to nonobservance of the maximum permissible load-bearing capacity of the ICM areas will be charged to the exhibitor. Any expense incurred by Messe München GmbH must be reimbursed.

### ■ Lifting equipment accepted within the ICM



#### Hand pallet truck

No driver authorization required

#### Electric pallet truck (low lift truck or "walkie")



Driver authorization, certificate or similar license for "Pedestrian-controlled vehicle" or "Forklift truck" required

#### Fork-lift trucks

**Kühne + Nagel (AG + Co.) KG**

Tel. + 49 89 949-24400

E-Mail [exposervice.muenchen@kuehne-nagel.com](mailto:exposervice.muenchen@kuehne-nagel.com)

#### Schenker Deutschland AG

Tel. + 49 89 949-24300

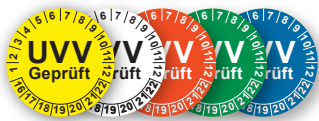
E-Mail [fairs.muenchen@dbschenker.com](mailto:fairs.muenchen@dbschenker.com)

The total permissible weight of forklift trucks for the ICM Foyer is 2.5 t (rated carrying capacity 0.6 t), and for exhibition hall B0 3.7 t (rated carrying capacity 1.71 t).

Booking and provision of the forklift trucks (incl. operating personnel) only via the forwarding agents of Messe München GmbH.

Please note the "General Information" mentioned above.

All devices must be tested according to the Accident Prevention Regulation (UVV) and must carry an up-to-date and clearly visible safety certification label.



Examples:

### ■ Lifting equipment NOT ALLOWED at the exhibition grounds of Messe München

Please note, that the usage of the following equipment is not allowed within the premises and/or the loading yards and parking spaces of Messe München.



#### Truck with mounted forklift

#### Electric pallet truck (low lift truck) with operator platform

#### Electric ant (walkie pallet stacker)

Additional information is provided with the "Technical Guidelines" of Messe München GmbH and the Notice "Technical Information ICM". Should any questions arise, please do not hesitate to contact your ICM team or the forwarding agents of Messe München GmbH.